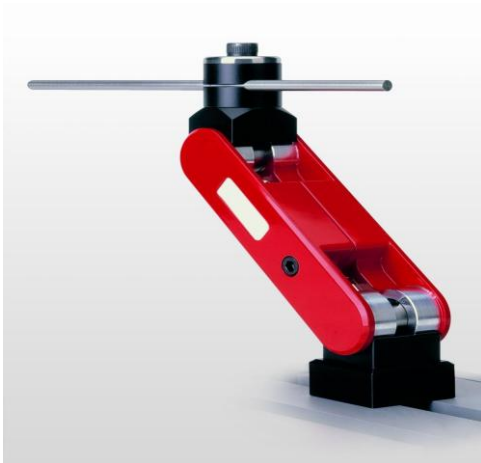
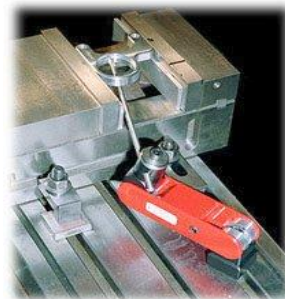


Tec Workstop



- Five Axis Positioning
- Quick Set-Up Time
- Accurate Repetitive Positioning.
- Very Stable
- Easy to Mount
- Three Sizes
- Competitive Price

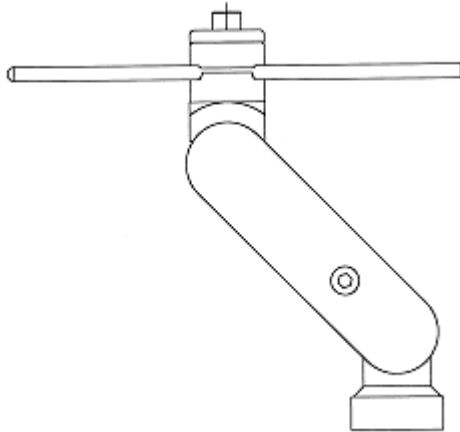
SAVE TIME – INCREASE EFFICIENCY



**Versatile Workstop for CNC
Machining Centres, Milling Machines and Drill
Presses**



Single Mount with 5 Axis Movements



Product Range

| Thame Part No. | A | B | C | T-Nut Width |
|----------------|-----|-----|-----|-------------|
| WSA 4 | 152 | 156 | 80 | 14 |
| WSA 5 | 200 | 225 | 125 | 14 |
| WSA 10 | 255 | 280 | 105 | 14 |



Versatile, Easy Mounting Workstop for quick and accurate repetitive positioning of workpieces,

THAME WORKHOLDING

Field End, Thame Road, Aylesbury, Bucks HP22 5DW

Tele: 01844 208050 Fax: 01844 201699

www.thameworkholding.com