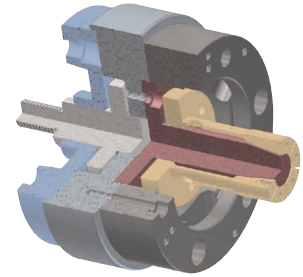
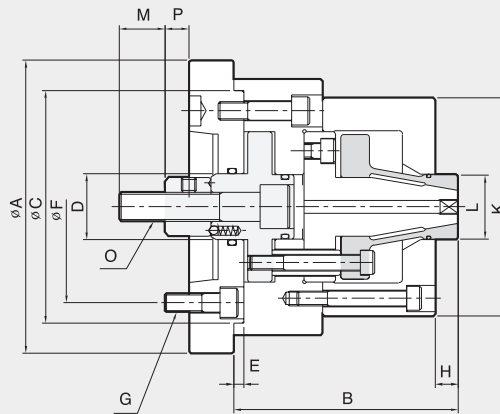
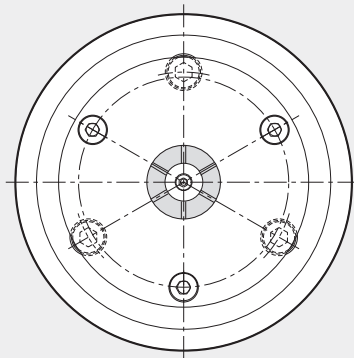


CDI

INSIDE-COLLET CHUCK



The CDI chuck pulls the workpiece flush with the locators before clamping from the inner diameter to increase the accuracy of machining right and circular angles. A variety of workpieces can be machined by changing the collet. An air sensor can be added to automate machining.



Dimensions

	A	B	C(h ⁺)	D	E	F	G	H	K	Lmax.	Lmin.	M	O	Pmax.	Pmin.
CDI-06	165	115	150	35	6	104.8	M10	15	L+25	15	40	40	M16	26	23
CDI-08	200	135	170	42	6	133.4	M12	20	L+35	90	40	45	M20	33	29
CDI-10	250	180	230	52	6	171.4	M16	35	L+40	130	90	55	M24	36	32
CDI-12	300	220	230	52	6	171.4	M16	40	L+50	180	130	55	M24	37	32

Specifications

	Clamping Force (kgf)	Max. Drawbar Pull (kgf)	Collet Expansion (mm)	Plunger Stroke (mm)	Chucking Diameter (mm)		Max. Speed (r.m.p)	Weight (kg)	GD ² (kgf m ²)
					Max	Min			
CDI-06	4000	1500	0.8	3	40	15	4500	7	0.06
CDI-08	7000	2500	1.0	4	90	40	4000	14	0.19
CDI-10	12000	4000	1.0	4	130	90	3300	34	0.71
CDI-12	15000	4800	1.4	5	180	130	2500	55	2.0